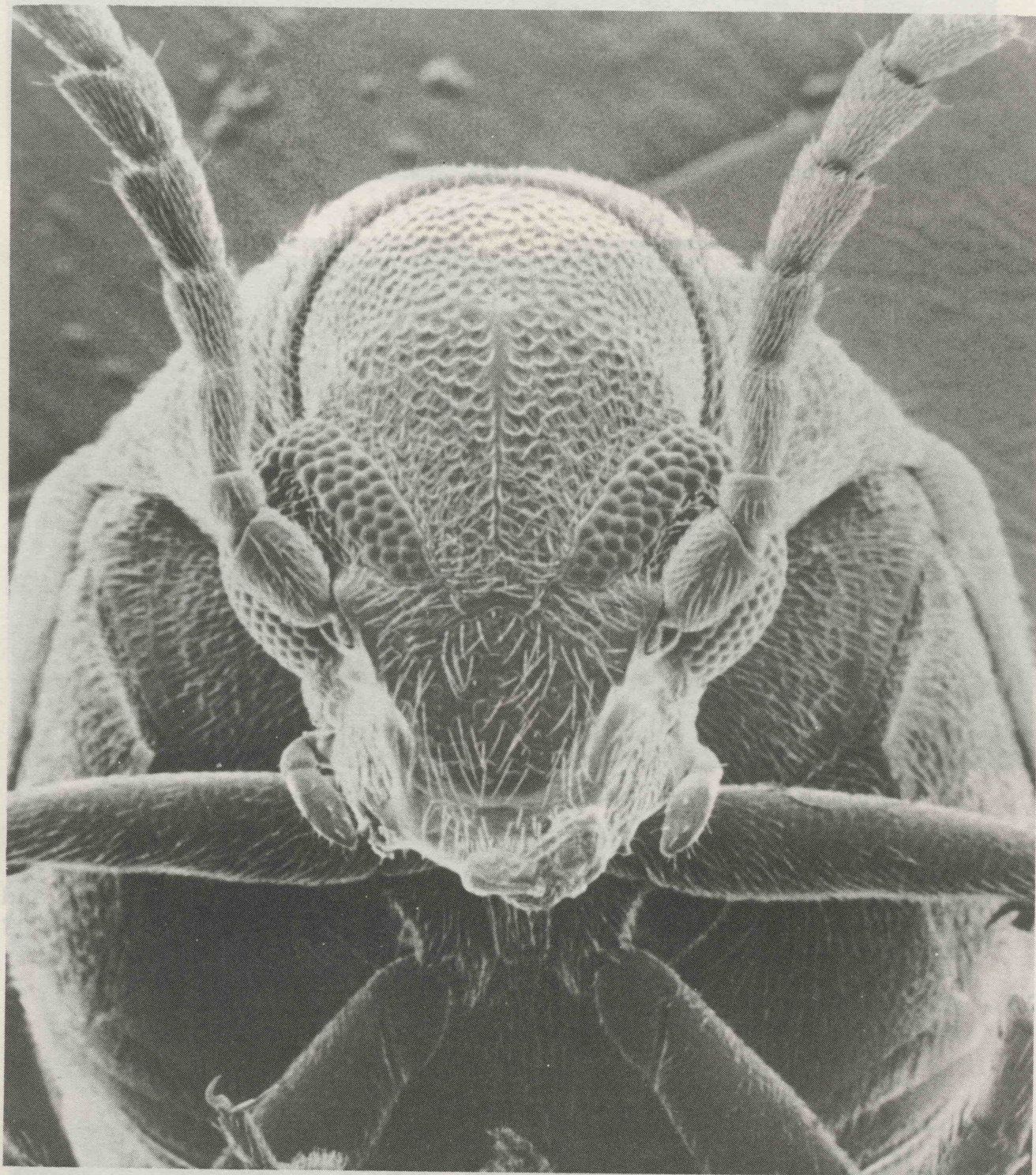


WHAT IS IT?



Turn over to the next page to find out about this picture

The photograph shows the head of the cowpea beetle, *Callosobruchus maculatus*, taken with a scanning electron microscope. It has been magnified about 130 times.

You can see clearly the two antennae, which are made up of many segments. A U-shaped compound eye curves above the base of each antenna.

The cowpea beetle probably originated in Africa but has now been spread to all tropical and subtropical parts of the world.

This beetle can develop only in the seeds of legumes, and it is

one of the major pests of stored legumes. It is interesting that the cowpea beetle is unable to develop in stored winged beans.

It has frequently been recorded in Papua New Guinea as a quarantine interception and has also been recorded infesting cowpeas stored here.

At the moment, the cowpea beetle is not a serious pest in this country. However, this could change when more grain legumes are stored in Papua New Guinea.

(Photograph: Commonwealth Institute of Entomology, London)

